

CONDENSER FAN SPEED CONTROLLER

P/N: FCSA

Suzhou CORESTAR Technology Co., Ltd

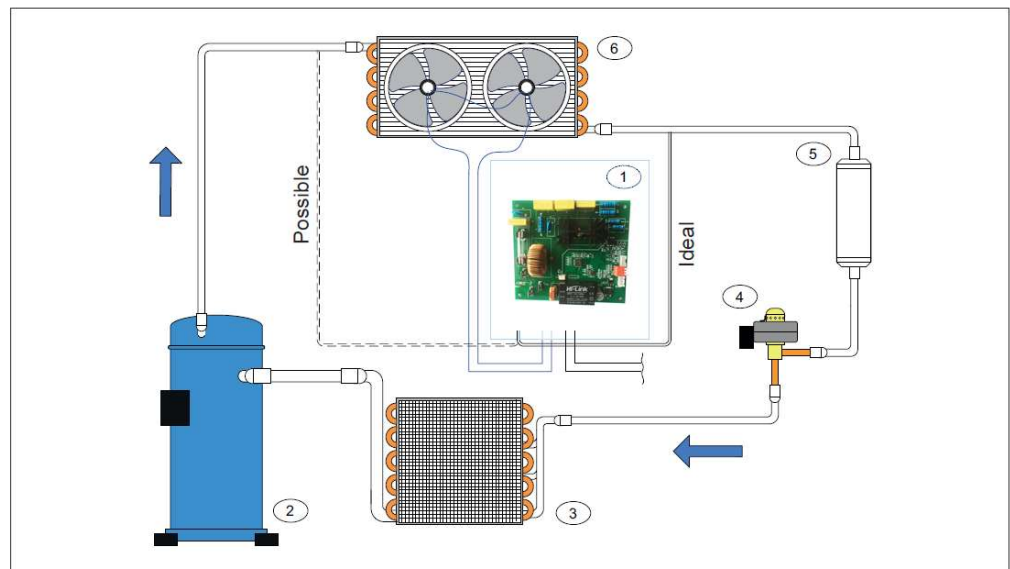
Features

- The most suitable for controlling the speed of a condenser fan of freezing and refrigeration condensing unit, package air conditioner and other units which are operated throughout a year
- Keep condensing pressure constant in winter and transition-season for stable operation.
- Support both voltage type and current type pressure transducer
- Support Modbus-RTU communication
- It can be adjusted proportionally according to the external 0-10V signal

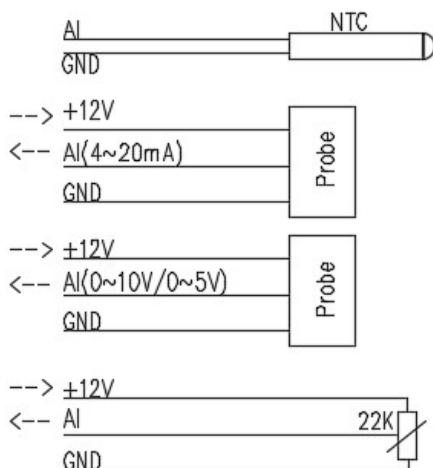


Typical application

1. FCSA
2. Compressor
3. Evaporator
4. EEV
5. Receiver
6. Condenser

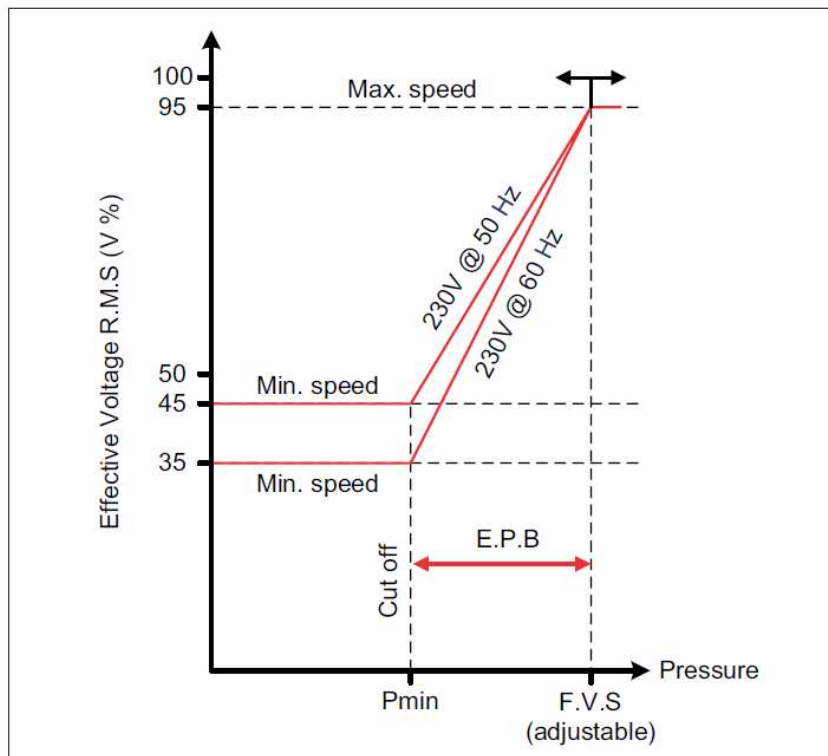


Wiring diagram (J1)



Control principles

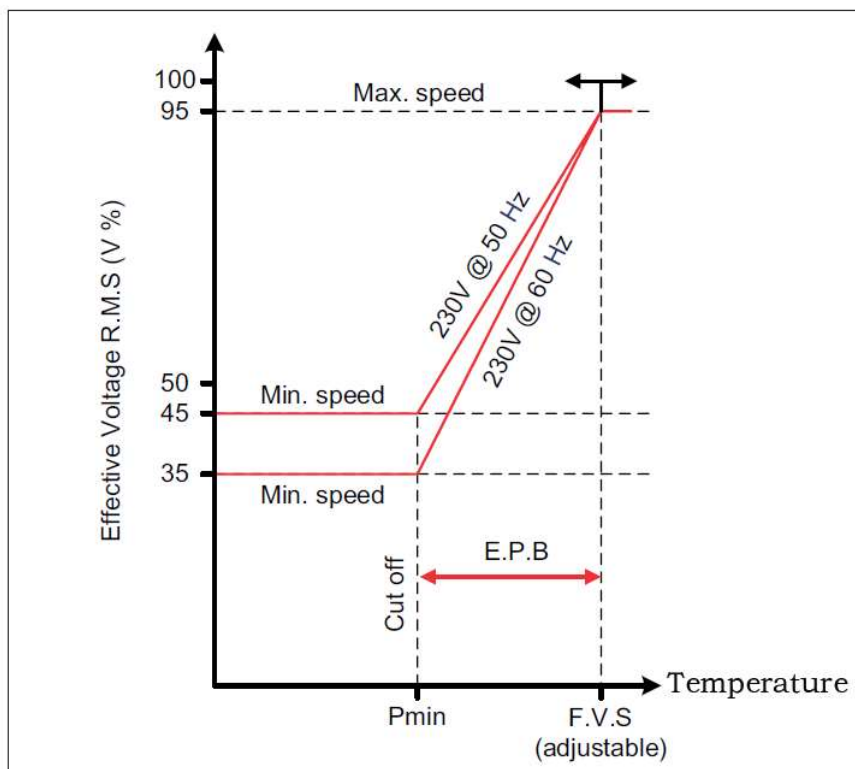
1. Based on pressure



F.V.S = Full Voltage Set Point (pressure setting for maximum speed)

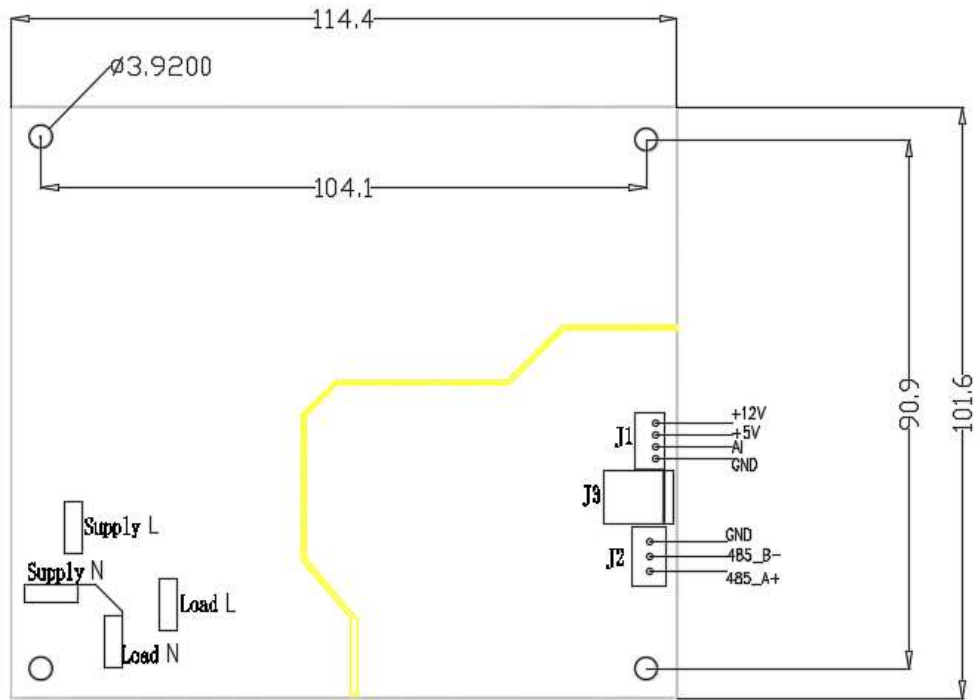
E.P.B = Effective Proportional Band

2. Based on NTC temperature



Dimensions (unit mm)

Unit: mm



Work mode definition by DIP switch

1	2	3	Definition
OFF	OFF	OFF	Modbus Address=1
OFF	OFF	ON	Modbus Address =2
OFF	ON	OFF	Modbus Address =3
OFF	ON	ON	Modbus Address =4
ON	OFF	OFF	0-10V
ON	OFF	ON	0.5~4.5V Pressure transducer
ON	ON	OFF	4-20mA Pressure transducer
ON	ON	ON	NTC Probe

Modbus RTU

parameters:

baud rate: 9600, Parity: None, data bit: 8, stop bit: 1

NOTE:

When controller is not in Modbus mode, address of Modbus address is 8.